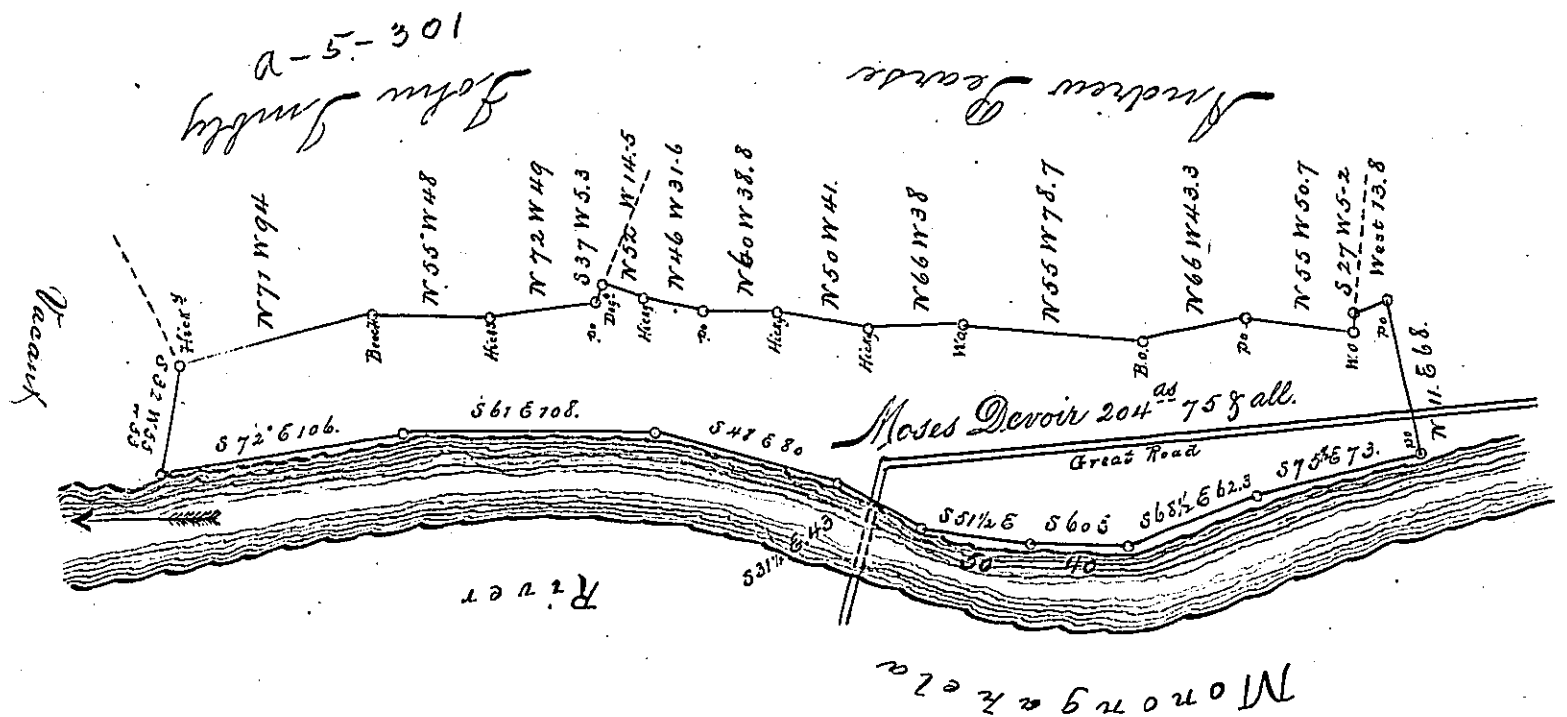


Allegheny County



"Situate on the southeast side of Monongahela River
 in Posttraver township Westmoreland County now
 Allegheny, & Surveyed the 9th day of April 1788
 In pursuance of a Warrant dated the 7th January 1788."
 To Gabriel Niester Esq. pr. Alexander McClean
 the present Surveyor General then Deputy
 January 4th 1825"

I do certify that the above is a correct copy of a draft &c as
 it stands recorded in Survey book IV page 80 of Fayette
 County Pa. Given under my hand this 20th day of June 1828.
 P. Lewis D.S

To Gabriel Niester Esquire
 Surveyor General

IN TESTIMONY that the above is a copy of the original remaining on file in the
 Department of Internal Affairs of Pennsylvania, made con-
 formably to an Act of Assembly approved the 16th day of
 February, 1823. I have hereunto set my Hand and caused
 the Seal of said Department to be affixed at Harrisburg, this
 third day of September 1895.

James W. Latta
 Secretary of Internal Affairs.